

Melanoma genetics and the development of rational therapeutics

Yakov Chudnovsky, ... , Paul A. Khavari, Amy E. Adams

J Clin Invest. 2005;115(4):813-824. <https://doi.org/10.1172/JCI24808>.

Science in Medicine

Melanoma is a cancer of the neural crest–derived cells that provide pigmentation to skin and other tissues. Over the past 4 decades, the incidence of melanoma has increased more rapidly than that of any other malignancy in the United States. No current treatments substantially enhance patient survival once metastasis has occurred. This review focuses on recent insights into melanoma genetics and new therapeutic approaches being developed based on these advances.

Find the latest version:

<https://jci.me/24808/pdf>





Melanoma genetics and the development of rational therapeutics

Yakov Chudnovsky, Paul A. Khavari, and Amy E. Adams

Veterans Affairs Palo Alto Healthcare System, Palo Alto, California. Program in Epithelial Biology, Stanford University School of Medicine, Stanford, California, USA.



Melanoma is a cancer of the neural crest–derived cells that provide pigmentation to skin and other tissues. Over the past 4 decades, the incidence of melanoma has increased more rapidly than that of any other malignancy in the United States. No current treatments substantially enhance patient survival once metastasis has occurred. This review focuses on recent insights into melanoma genetics and new therapeutic approaches being developed based on these advances.

History and clinical features of melanoma

The first accredited report of melanoma is found in the writings of Hippocrates (born c. 460 BC), where he described “fatal black tumors with metastases.” Paleopathologists discovered diffuse bony metastases and round melanotic masses in the skin of Peruvian mummies of the fourth century BC (1). However, it was not until 1806, when René Laennec described “la melanose” to the Faculté de Médecine in Paris, that the disease was characterized in detail and named (2). General practitioner William Norris suggested that melanoma may be hereditary in an 1820 manuscript describing a family with numerous moles and several family members with metastatic lesions (3). Molecular insights over the past 20 years have confirmed Norris’s theory of a significant genetic contribution to the etiology of melanoma.

Melanoma develops from the malignant transformation of melanocytes, the pigment-producing cells that reside in the basal epidermal layer in human skin (Figure 1). Recognized as the most common fatal skin cancer, melanoma incidence has increased 15-fold in the past 40 years in the United States, a rate more rapid than that described for any other malignancy (4). Every hour, an American will die from melanoma (5), and it remains one of the most common types of cancer among young adults (6). Furthermore, according to US statistics for 1973–1997, the increase in the mortality rate for melanoma in individuals 65 years of age and older, especially men, was the second highest among all cancers (4).

As in many cancers, both genetic predisposition and exposure to environmental agents are risk factors for melanoma development. Case-control studies have identified several risk factors in populations susceptible to developing melanoma (7). Melanoma primarily affects fair-haired and fair-skinned individuals, and those who burn easily or have a history of severe sunburn are at higher risk than their darkly pigmented, age-matched controls.

Nonstandard abbreviations used: ADI, arginine deiminase; CDK, cyclin-dependent kinase; *CDKN2A*, cyclin-dependent kinase inhibitor 2A; DNS, dysplastic nevus syndrome; MEK, MAPK kinase; PEG, polyethylene glycol; pRb, Rb protein; PTEN, phosphatase and tensin homolog; Rb, retinoblastoma; RCC, renal cell carcinoma; RGP, radial growth phase; siRNA, small interfering RNA; SLNB, sentinel lymph node biopsy; VGP, vertical growth phase.

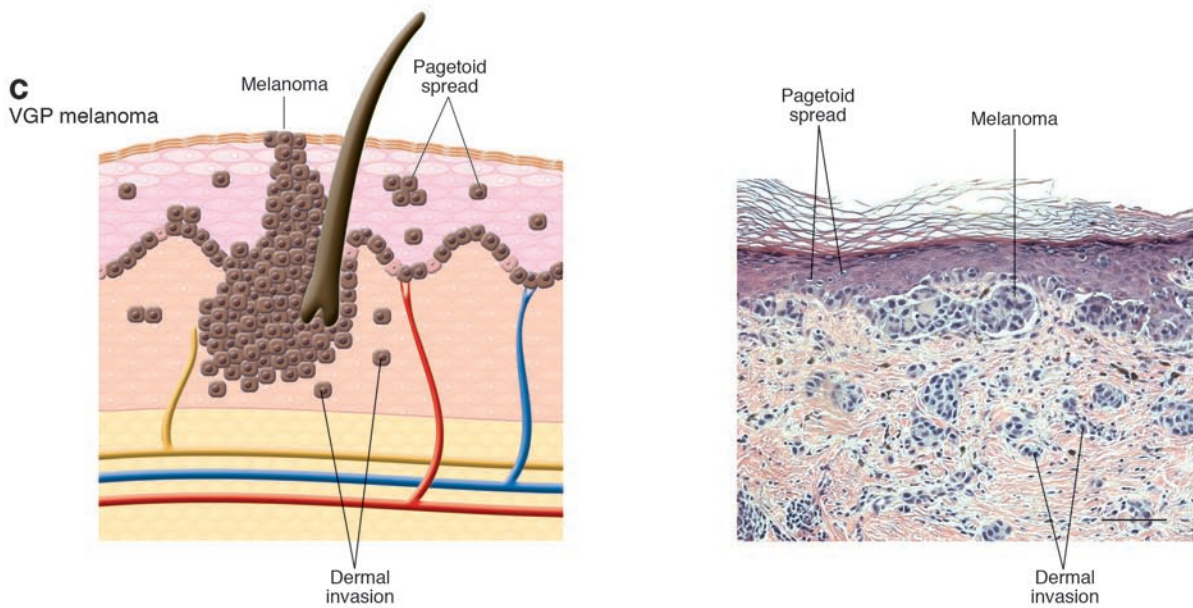
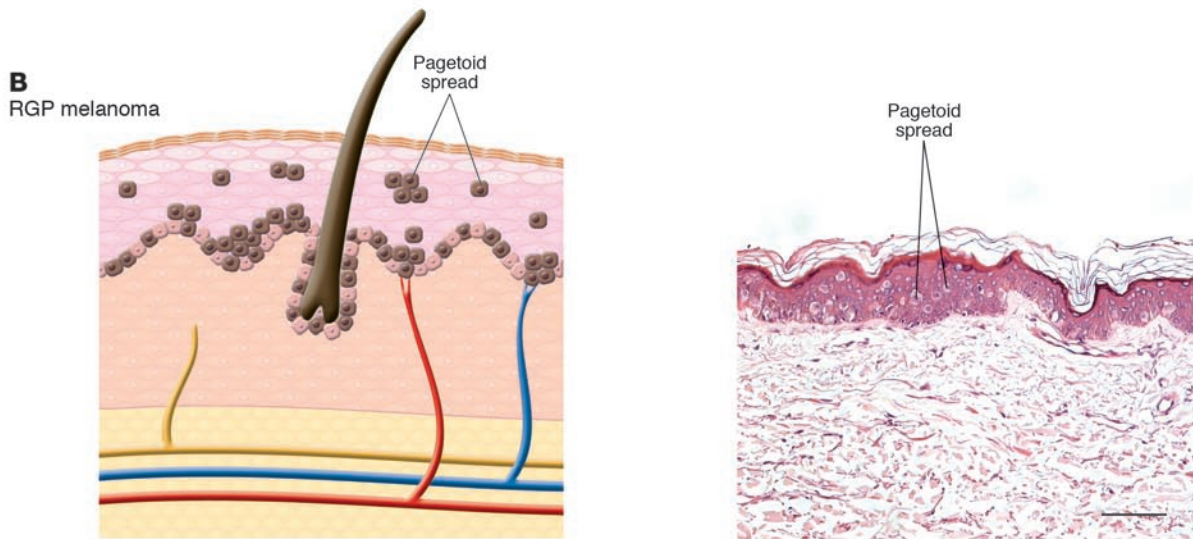
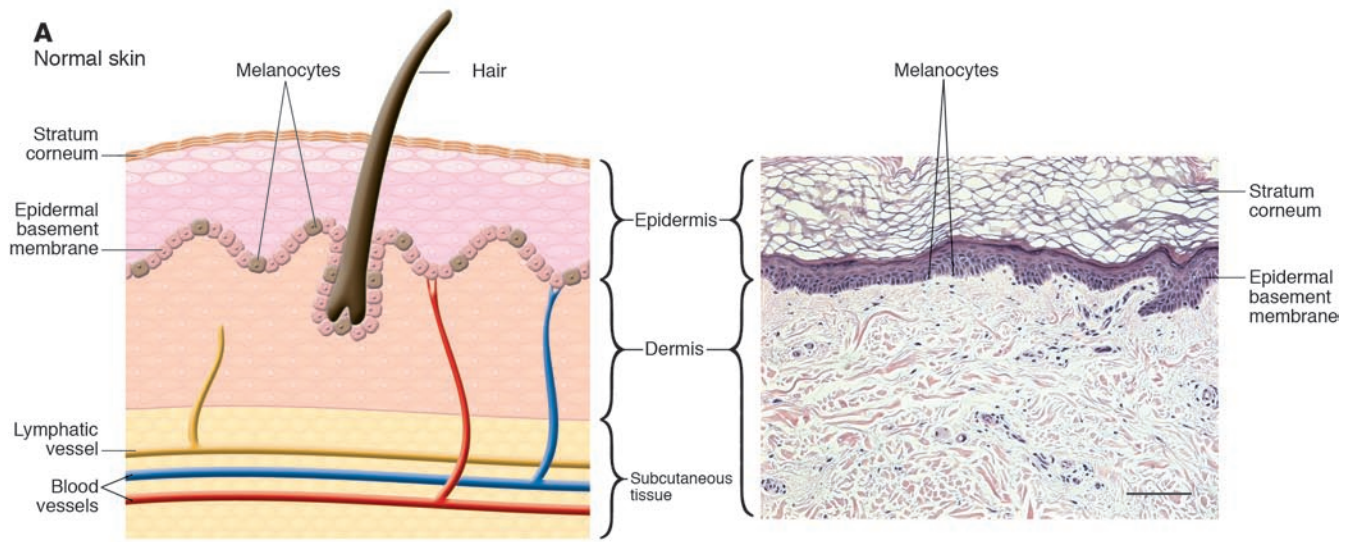
Conflict of interest: The authors have declared that no conflict of interest exists.

Citation for this article: *J. Clin. Invest.* 115:813–824 (2005). doi:10.1172/JCI200524808.

The UV component of sunlight causes skin damage and increases the risk for skin cancers such as melanoma. It appears that melanoma risk is typically associated with intermittent, intense sun exposure rather than cumulative sun exposure (an exception is lentigo maligna melanoma). The exact mechanism and wavelengths of UV light that are the most critical remain controversial, but both UV-A (wavelength 320–400 nm) and UV-B (290–320 nm) have been implicated (4, 8). This is in contrast to the nonmelanoma skin cancers, basal cell carcinoma and squamous cell carcinoma, which arise from epidermal keratinocytes and are more strongly associated with cumulative sun exposure. Melanoma incidence in fair-skinned people is inversely related to latitude of residence, with the highest incidence found in Australia, which supports the role of UV-induced damage in melanoma pathogenesis (9). In the 1920s, women’s fashions became more revealing, and French fashion designer Coco Chanel, who developed a suntan when cruising from Paris to Cannes, is credited with initiating the modern sunbathing trend (10). As our social dress has moved from petticoat and parasol or topcoat and hat to tank top and sunglasses, the incidence of skin cancers, including melanoma, has increased significantly.

Family history of melanoma, increased numbers of both common and dysplastic moles, and a tendency to freckle also increase risk (11). Ten percent of melanoma patients have an affected relative. In a small number of cases, melanomas occur in the setting of the familial atypical multiple mole and melanoma syndrome, also referred to as the dysplastic nevus syndrome (DNS) (12, 13). DNS-affected kindreds develop many atypical moles (dysplastic nevi) at a young age and acquire melanoma with a higher penetrance and earlier onset than are typical of sporadic melanoma. Some evidence suggests that dysplastic nevi may be melanoma precursors in a subset of cases; however, this correlation is controversial and difficult to clearly document (4, 12). More than 50% of melanomas likely arise *de novo* without a precursor lesion.

Cutaneous melanoma can be subdivided into several subtypes, primarily based on anatomic location and patterns of growth (see Table 1 for key clinical features of subtypes; reviewed in ref. 4). The majority of melanoma subtypes are observed to progress through distinct histologic phases (Figure 1). As melanomas progress from the radial growth phase (RGP) to the vertical growth phase (VGP), treatment options, cure rates, and survival rates decrease dramatically. Most melanoma subtypes demonstrate a slow RGP



**Figure 1**

Phases of histologic progression of melanocyte transformation. H&E-stained histologic sections and corresponding pictorial representation. **(A)** Normal skin. There is even distribution of normal dendritic melanocytes in the basal epithelial layer. **(B)** RGP in situ melanoma. Melanoma cells have migrated into the upper epidermis (pagetoid spread) and are scattered among epithelial cells in a “buckshot” manner. Cells have not penetrated the epidermal basement membrane. Melanoma cells show cytologic atypia, with large abundant cytoplasm and increased overall size compared with normal melanocytes. Nuclei are enlarged and hyperchromatic. Commonly, there is more junctional melanocytic hyperplasia (nests of tumor cells at the basement membrane zone) in RGP melanoma than portrayed in the histologic example. **(C)** VGP malignant melanoma. Melanoma cells show pagetoid spread and have penetrated the dermal-epidermal junction. Melanoma cells show cytologic atypia. Cells in the dermis cluster or individually invade. Magnification, $\times 20$. Scale bar: 20 μm .

restricted to the epidermis, followed by a potentially more rapid VGP (14). RGP melanoma cells extend upward into the epidermis (pagetoid spread) but remain in situ and lack the capacity to invade the dermis and metastasize. RGP melanoma is generally cured by excisional surgery. VGP melanoma invades the dermis and deeper structures and is metastatically competent (15, 16).

Melanoma can be further classified into clinical stages according to significant prognostic factors, and this staging system was recently revised by the American Joint Committee on Cancer (AJCC) (see *Staging for cutaneous melanoma*; a complete staging system is summarized in ref. 17). The AJCC prognostic indicators were confirmed by analysis of outcomes in over 17,000 patients. In the absence of known distant metastasis, the most important prognostic indicator is regional lymph node involvement. However, the majority of melanoma patients present with clinically normal lymph nodes. Thus, in clinically node-negative patients, the microscopic degree of invasion of melanoma is of importance in predicting outcome. There are 2 systems described for microscopic staging of primary cutaneous melanoma, Clark level and Breslow thickness (4). Clark levels classify melanoma according to anatomic landmarks in the epidermis, dermis, and fat (18). While this system correlates with prognosis, an inherent concern with Clark microscopic staging is that the thickness of the skin, and thus the location of these defined landmarks, varies in different parts of the body. Breslow thickness is a measure of the absolute thickness of the tumor from the granular layer (the most superficial nucle-

ated layer of the epidermis) to the deepest contiguous tumor cell at the base of the lesion (19). Breslow thickness has strong prognostic value in those with nonmetastatic melanoma. The presence of regional lymph node metastasis is a concerning sign regardless of the microscopic stage of the primary lesion. However, there is a direct relationship between the thickness of the primary lesion and the likelihood of microscopic nodal involvement in individuals with clinically normal nodes.

Melanoma prognosis also worsens with the histologic findings of ulceration, high tumor cell mitotic rate, sparse lymphocytic host response, vascular invasion, and histologic signs of tumor regression (17, 20). Increasing age, male sex, and tumor location on the trunk, head, or neck also worsen prognosis. The expression of the cellular marker and melanocyte-specific protein, melastatin, in melanoma cells appears to be inversely proportional to metastasis and was correlated with prolonged disease-free survival in a study of 150 patients with localized disease (21). The presence of tumor-infiltrating T lymphocytes in the VGP of primary melanomas correlates with decreased recurrence and reduced mortality (20, 22). Tumor immunity (host immune response to a tumor) has potential to be exploited for therapeutic use (23, 24).

Once metastasis to lymph nodes occurs, the 5-year survival ranges from 13% to 69%, depending on the number of lymph nodes affected and tumor burden (17). With visceral metastasis, the 5-year survival drops to approximately 6%, and the median survival from time of diagnosis is 7.5 months (25). The management of patients with clinically normal lymph nodes remains controversial. Elective node dissection has been replaced by sentinel lymph node biopsy (SLNB). In this method, lymphatic mapping is done to find the primary (or sentinel) draining lymph node or nodes, and histologic analysis is performed to assist with determining prognosis and staging. Currently, SLNB remains a diagnostic procedure, as it is unclear whether SLNB improves survival. SLNB's impact on survival is the subject of a large, randomized study, the Multicenter Selective Lymphadenectomy Trial (26). Unfortunately, there are no treatment options currently available that have been shown to increase life expectancy once melanoma spreads to regions beyond which it can be cured by local surgical excision.

Because there is no effective therapy for widely metastatic melanoma, the general public and primary care physicians must be aware of the classic clinical signs of melanoma in order to reduce mortality by detecting the disease in the early stages. These signs include change in color, recent enlargement, nodularity, irregular

Table 1

Clinical classification of melanoma

Subtype	Frequency	Common site	Key distinguishing features
Superficial spreading melanoma	70%	Trunk of men Legs of women	RGP, 1–5 years
Nodular melanoma	10–25%	Trunk of men Legs of women	RGP, 6–18 months
Acral lentiginous melanoma	5%	Palms, soles, nails	Not related to sun damage All races affected Accounts for 30–70% of melanoma in dark-skinned individuals
Lentigo maligna melanoma	<1%	Head and neck of elderly	Associated with chronic sun exposure RGP, 3–15 years
Noncutaneous melanoma	5%	Ocular, mucosal	Not associated with sun exposure Prognostic features and treatment differ from that of cutaneous subtypes



Staging for cutaneous melanoma: a simplified overview

Stage 0	Melanoma involves the epidermis but has not reached the underlying dermis.
Stages I and II	Melanoma is characterized by tumor thickness and ulceration status. No evidence of regional lymph node or distant metastasis.
Stage III	Melanoma is characterized by lymph node metastasis. No evidence of distant metastasis.
Stage IV	Melanoma is characterized by the location of distant metastases and the level of lactate dehydrogenase.

Cancers such as melanoma arise due to accumulation of mutations in genes critical for cell proliferation, differentiation, and cell death (30). In addition, cancer cells acquire the ability to initiate and sustain angiogenesis, invade across tissue planes, and metastasize. The clinical and histologic progression observed in the growth phases of melanoma (Figure 1) is hypothesized to correspond to the accumulation of these genetic mutations (14). In order to develop treatments for advanced

borders, and bleeding. Cardinal signs of melanoma are sometimes referred to by the mnemonic ABCDEs (asymmetry, border irregularity, color, diameter, elevation).

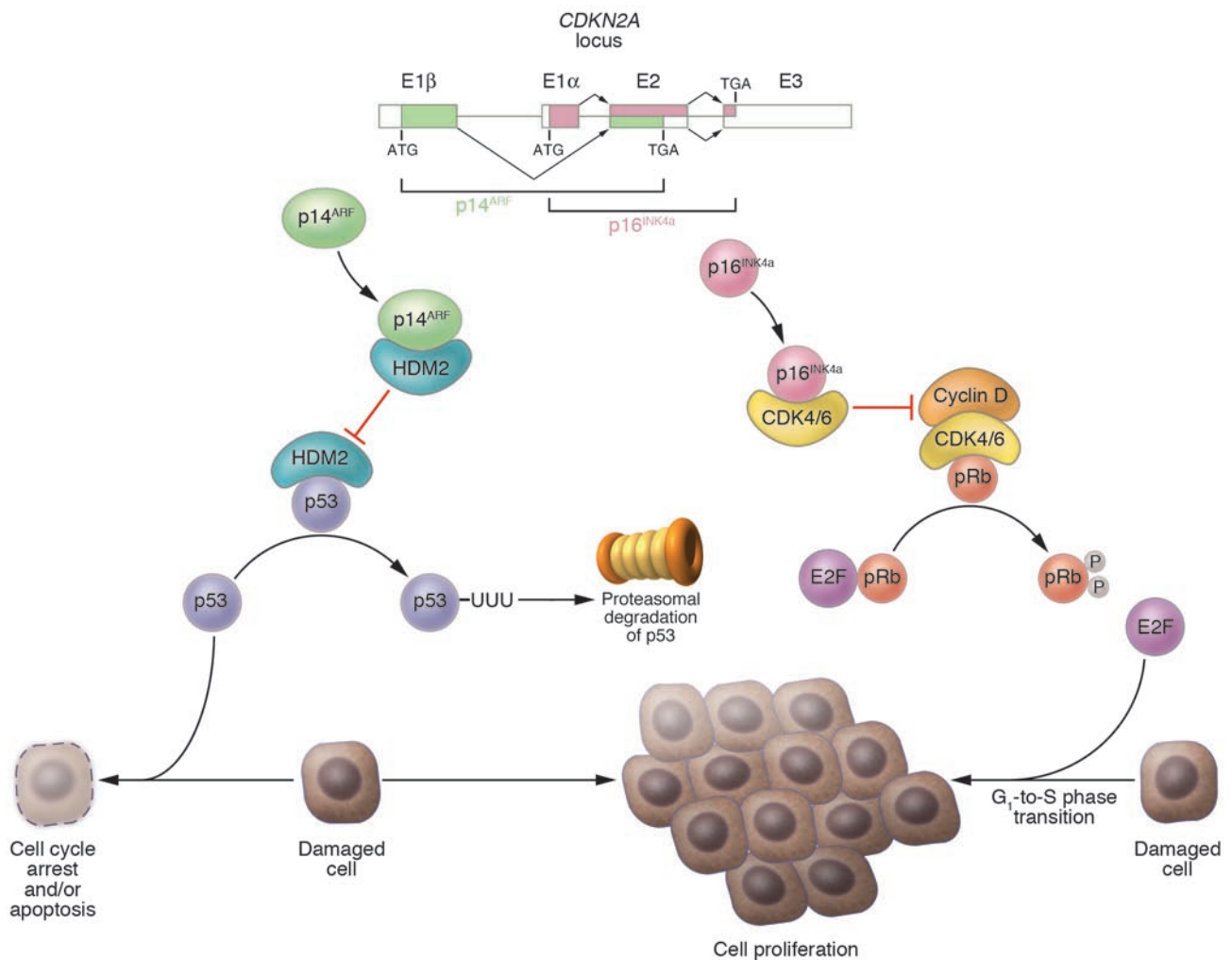
Histologic diagnosis of melanoma depends on a combination of certain characteristic architectural features and cellular atypia (reviewed in ref. 27). The discovery of histologic markers unique to melanocytes or melanoma, such as differentiation antigen melanoma antigen recognized by T cells 1 (MART-1), also known as Melan-A, and human melanoma, black-45 (HMB-45), has aided melanoma diagnosis, but there is no marker that is 100% specific or sensitive (28, 29). Thus, fulfillment of histopathologic criteria (reviewed in ref. 4), combined with multiple positive histologic markers, provides the most reliable method of diagnosis.

disease and to increase survival from metastatic melanoma, it is critical to understand the genetic changes leading to each progressive step of the cancer, especially the transition from RGP to VGP. Furthermore, an understanding of the changes that permit invasion through the epidermal basement membrane and thus allow for subsequent metastasis will permit the rational design of treatments for early stages of melanoma and potentially the design of chemopreventive treatments for patients with premalignant lesions or who are at high risk for melanoma development. In addition, an understanding of tumor biology and immunology will aid in the rational design of biochemotherapy and immunotherapy agents for more advanced stages of disease. Mutations observed in human melanoma patients provide starting points for a genetic analysis of melanoma.

Table 2
Nomenclature of genes and proteins discussed in the text

Human gene	Mouse gene	Protein	Gene name	Function
<i>CDK4</i>	<i>Cdk4</i>	CDK4	<i>Cyclin-dependent kinase 4</i>	Promotes G ₁ -to-S phase transition by phosphorylating and thereby inactivating pRb
<i>CDK6</i>	<i>Cdk6</i>	CDK6	<i>Cyclin-dependent kinase 6</i>	Same as that of CDK4
<i>CDKN2A</i>	<i>Cdkn2a</i>	p16 ^{INK4a} , p14 ^{ARF} (p19 ^{ARF} in mouse)	<i>Cyclin-dependent kinase inhibitor 2A</i>	Encodes 2 tumor suppressors, <i>INK4a</i> and <i>ARF</i> (see below)
<i>INK4a</i>	<i>Ink4a</i>	p16 ^{INK4a}	<i>Cyclin-dependent kinase inhibitor 2A</i> (see above)	Tumor suppressor that blocks CDK4/6-mediated inactivation of pRb
<i>ARF</i>	<i>Arf</i>	p14 ^{ARF} (p19 ^{ARF} in mouse)	<i>Alternative reading frame</i>	Tumor suppressor that blocks HDM2-mediated degradation of p53
<i>BRAF</i>		B-Raf	<i>v-raf murine sarcoma viral oncogene homolog B1</i>	Protooncogene that activates MEK family of MAPK kinases; the gene most often mutated in melanoma and melanocytic nevi
<i>CRAF</i>		C-Raf	<i>v-raf-1 murine leukemia viral oncogene homolog 1</i>	Protooncogene that activates MEK family of MAPK kinases
<i>HRAS</i>	<i>Hras</i>	H-Ras	<i>v-Ha-ras Harvey rat sarcoma viral oncogene homolog</i>	Protooncogene mutated frequently in human tumors; in oncogenic state, activates many pathways important for cancer development, particularly Raf-MEK-ERK and PI3K-Akt
<i>NRAS</i>	<i>Nras</i>	N-Ras	<i>Neuroblastoma RAS viral (v-ras) oncogene homolog</i>	Same as that of <i>HRAS</i> ; most frequently mutated <i>RAS</i> isoform in melanoma and nevi
<i>PTEN</i>	<i>Pten</i>	PTEN	<i>Phosphatase and tensin homolog</i>	Tumor suppressor that blocks PI3K-mediated activation of Akt
<i>AKT3</i>		Akt3	<i>v-akt murine thymoma viral oncogene homolog 3</i>	Protooncogene normally activated by PI3K; in melanoma, often constitutively activated via <i>AKT3</i> gene amplification or loss/mutation of <i>PTEN</i>
<i>TP53</i>		p53	<i>Tumor protein p53</i>	Tumor suppressor activated by many stimuli, particularly genetic damage; promotes apoptosis or cell cycle arrest

HRAS and *NRAS* (along with *KRAS*) are members of the *RAS* gene family (protein family designated Ras). *BRAF* and *CRAF* (along with *ARAF*) are members of the *RAF* gene family (protein family designated Raf). Raf proteins are kinases that are activated by the Ras proteins and in turn activate MEK 1 and MEK2. *AKT3* (along with *AKT1* and *AKT2*) is a member of the *AKT* gene family (protein family designated Akt).

**Figure 2**

Genetic encoding and mechanism of action of tumor suppressors p16^{INK4a} and p14^{ARF}. The *CDKN2A* locus on chromosome 9p21 is composed of 4 exons (E) – 1 α , 1 β , 2, and 3 – and encodes 2 tumor suppressors, p16^{INK4a} and p14^{ARF} (termed p19^{ARF} in the mouse), via alternative reading frames. p16^{INK4a} is translated from the splice product of E1 α , E2, and E3, while p14^{ARF} is translated from the splice product of E1 β , E2, and E3. Normally p16^{INK4a} sequesters CDK4 and CDK6 thereby keeping pRb in an active hypophosphorylated state. In the absence of p16^{INK4a}, CDK4 and CDK6 bind cyclin D and phosphorylate Rb. Phosphorylated pRb then releases the E2F transcription factor, which promotes the G1-to-S phase transition of the cell cycle. p14^{ARF}, on the other hand, sequesters the p53-specific ubiquitin ligase HDM2. In the absence of p14^{ARF}, HDM2 targets p53 for ubiquitination (UUU) and subsequent proteasomal degradation, and the loss of p53 impairs mechanisms that normally target genetically damaged cells for cell cycle arrest and/or apoptosis, which leads to proliferation of damaged cells. Loss of *CDKN2A* therefore contributes to tumorigenesis by disruption of both the pRb and p53 pathways. Figure modified with permission from *N. Engl. J. Med.* (S30).

Identification of melanoma-associated genes from patient samples

Much of our knowledge of melanoma susceptibility loci derives from genetic studies of melanoma-prone families. Although these families are rare, they have proven invaluable in the identification of genetic pathways that play roles in the development of familial as well as sporadic melanoma (31). See Table 2 for the symbols and definitions of melanoma-associated genes described herein.

Tumor suppressor pathways. Melanoma development has been shown to be strongly associated with inactivation of the p16^{INK4a}/cyclin dependent kinases 4 and 6/retinoblastoma protein (p16^{INK4a}/CDK4,6/pRb) and p14^{ARF}/human double minute 2/p53 (p14^{ARF}/HMD2/p53) tumor suppressor pathways. These pathways help control the G₁ phase of the cell cycle and are most often inhibited

via deletions or mutations in the *cyclin-dependent kinase inhibitor 2A* (*CDKN2A*) locus on chromosome 9p21 (32, 33). This locus encodes 2 tumor suppressors, p16^{INK4a} and p14^{ARF}, via alternative reading frames (34) (Figure 2). p16^{INK4a} sequesters CDK4 and CDK6 and thereby blocks phosphorylation of pRb by these kinases, keeping pRb in its active state inhibiting cell-cycle progression (35). p14^{ARF}, on the other hand, stabilizes p53 by preventing HMD2-mediated degradation of the otherwise transiently expressed p53 protein (36–39) (Figure 2). Germline *CDKN2A* mutations were identified in 25–50% of familial melanoma kindreds (40–42). The importance of this locus in melanoma susceptibility was confirmed by studies showing that the penetrance of *CDKN2A* mutations significantly correlated with residence in a geographical location with a high population incidence rate of melanoma (43) and that *CDKN2A*

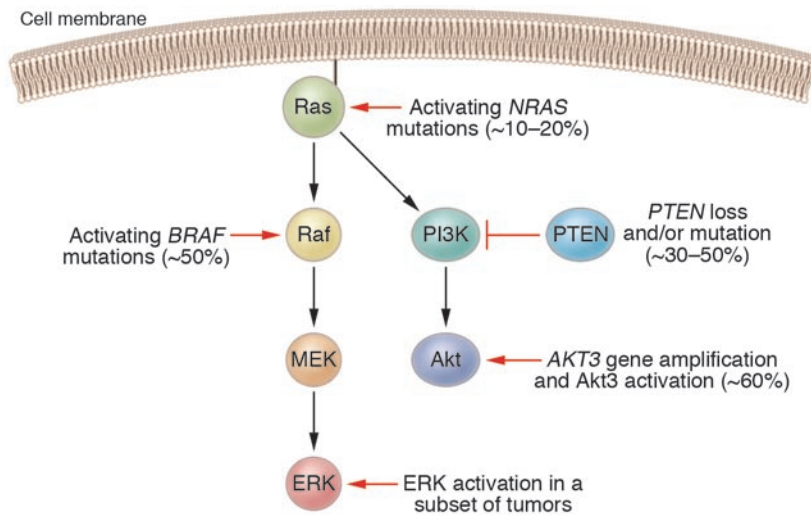


Figure 3

Schematic of the canonical Ras effector pathways Raf-MEK-ERK and PI3K-Akt and the mutations that most often activate these pathways in melanoma patients. Oncogenic *NRAS* mutations, found in approximately 10–20% of melanomas, activate both effector pathways. The Raf-MEK-ERK pathway may also be activated via mutations in the *BRAF* gene, found in approximately 50% of melanomas. In a subset of melanomas, the ERK kinases have been shown to be constitutively active even in the absence of *NRAS* or *BRAF* mutations. The PI3K-Akt pathway may be activated through loss or mutation of the inhibitory tumor suppressor gene *PTEN*, occurring in 30–50% of melanomas, or through gene amplification of the *AKT3* isoform. While the exact frequency of *AKT3* gene amplification is unknown, the Akt3 kinase is constitutively activated in approximately 60% of melanomas. Activation of ERK and/or Akt3 promotes the development of melanoma by various mechanisms, including stimulation of cell proliferation and enhanced resistance to apoptosis.

mutation carriers have increased total nevus number and total nevus density – known risk factors for melanoma – compared with noncarriers within the same family (44). Inheritance of variants of the *melanocortin-1 receptor* gene seen in red-haired patients, along with *CNKN2A* mutations, further increases the risk of melanoma in melanoma-prone families (31, 45). Subsequent studies showed a similar frequency of somatic *CDKN2A* alterations in sporadic melanomas (e.g., refs. 46–49). Notably, melanoma-associated *CDKN2A* mutations and deletions may ablate only the *INK4a* transcript (42, 50), the *ARF* transcript (51, 52), or both (47–49, 53, 54), which indicates that each of these tumor suppressors plays an important individual role as a guardian against melanoma development. Less frequently, pRb may also be inactivated via *CDK4* mutations – R24C or R24H – that occur in both sporadic and familial melanomas (55–58). These mutations prevent binding of p16^{INK4a} to CDK4, rendering the kinase constitutively active. Although *TP53* mutations are not universal in melanoma (59–61), several groups have reported a mutation frequency in the range of 10–25% (62–65), with at least 1 recent study (65) suggesting a correlation between *TP53* mutation and poor prognosis.

Oncogenic Ras and its effectors. Melanoma-associated oncogene activation most often targets Ras and its canonical effector pathways, Raf-MAPK kinase-ERK (RAF-MEK-ERK) and PI3K-Akt (Figure 3). The mutation frequency of the *RAS* gene family, particularly *NRAS*, in human melanoma has been estimated in the majority of recent studies as 10–20% (65–69). A subset of melanomas has also been shown to harbor constitutive Ras activation without underlying mutations (70). Oncogenic Ras activates both the Raf and

PI3K cascades. The importance of both of these pathways in melanoma development has been further confirmed by the identification of genetic alterations that activate each one independently.

The first indication of involvement of the PI3K-Akt pathway in the progression of melanoma was the discovery of frequent loss of *phosphatase and tensin homolog (PTEN)* in melanocytic lesions. *PTEN* is a protein and lipid phosphatase that inhibits Akt activation by PI3K (reviewed in ref. 71) (Figure 3). Loss of heterozygosity in regions of chromosome 10q, which harbors the *PTEN* locus, was demonstrated in 30–50% of malignant melanomas (72–74), and approximately 10% of melanomas were shown to have *PTEN* mutations (75–77). Interestingly, patients with disorders such as Cowden disease, which arise from inherited *PTEN* mutations and are characterized by the presence of benign hamartomatous tumors, are not widely reported to display an increased susceptibility to melanoma. More recently, 2 studies directly demonstrated that Akt is constitutively activated in more than 60% of melanomas, with higher frequencies of activation at later stages of the disease (78, 79). The latter study, by Stahl et al. (79), identified amplification of the *AKT3* gene as an additional mechanism, distinct from *PTEN* loss, that may be responsible for these high frequencies of Akt activation.

The role of the Raf-MEK-ERK cascade in melanoma development has received a great deal of attention in the past 3 years, due to the identification of mutations in the *BRAF* gene in a high proportion of melanomas. The initial study by Davies et al. estimated that 67% of melanomas harbor *BRAF* mutations (66). By far the most frequent mutation is V599E; this mutation, found in the activation segment of the B-Raf kinase domain, renders the protein constitutively active and leads to elevated ERK1/2 activation. A great number of follow-up studies (e.g., refs. 67, 69, 80–83) have further examined the frequency of *BRAF* mutations in benign and malignant melanocytic lesions. The resulting estimates have varied from 30% to 70%, and taken together, the published data suggest that approximately 50% of melanomas carry the *BRAF*^{V599E} mutation (84). B-Raf activation is thus one of the most frequent melanoma-associated genetic events, on par with activation of the PI3K-Akt pathway.

Several aspects of the association between *BRAF* mutation and melanoma bear further discussion. *BRAF* mutations are extremely rare in uveal (ocular) and mucosal melanomas (85, 86), which suggests that sun-related, UV-induced carcinogenesis may play a role in causing these mutations. Importantly, although approximately half of all melanomas carry the *BRAF*^{V599E} mutation, this alteration is also found in 70–80% of common acquired melanocytic nevi (67, 83, 87). This finding strongly suggests that *BRAF* mutation is an early event in the development of melanocytic neoplasia and alone may not be sufficient to drive melanoma development. While all studies published to date have found a higher rate of *BRAF* mutations in nevi than in melanomas, contradictory findings have been reported concerning the frequencies of *BRAF* mutations at different stages of malignancy. Some groups have found *BRAF* mutations in a higher proportion of metastatic melanomas than



early-stage primary melanomas (65, 81), but others have reported a decreasing mutation frequency in association with more advanced disease (67). Likewise, the presence of *BRAF* mutations in metastatic melanoma has been reported to correlate with a shorter survival in one study (88) and with a longer survival in another (89). Thus, the genetic evidence regarding the role of *BRAF* late in melanoma progression is currently inconclusive and merits further investigation. Finally, it is important to note that *BRAF* mutations may occur concurrently with loss or mutation of *PTEN*, but neither *BRAF* nor *PTEN* alterations are found together with *NRAS* mutations (65, 90, 91). Thus, melanomas that have arisen in the absence of *NRAS* mutations nearly always harbor activated *BRAF*, inactivating alterations of *PTEN*, or both. Conversely, tumors with oncogenic *NRAS* mutations typically retain wild-type *BRAF* and *PTEN*. These results reiterate the importance of both the PI3K-Akt and Raf-MEK-ERK cascades in melanoma development; they also suggest that each of these pathways plays a significant role in melanoma development and that, in a subset of melanomas, the 2 pathways may cooperate in promoting cancer progression.

Investigation of melanoma-associated mutations in experimental models

The functional importance of genes mutated in a high proportion of human melanomas has begun to be elucidated via studies in vitro and in mice. Initial experiments showed that mice carrying a deletion of the *Cdkn2a* locus have increased predisposition to tumor development (92). In subsequent studies designed to clarify the roles of the 2 genes encoded by this locus, mice with a selective knockout of the *Arf* gene (93, 94) or the *Ink4a* gene (95, 96) were generated and determined to be cancer prone. These findings directly showed that both *Ink4a* and *Arf* are important tumor suppressor genes, but in all of these studies, the knockout mice developed predominantly lymphomas and sarcomas, with very few spontaneous melanomas observed (92–96). However, when the *Cdkn2a*-null mice were engineered to express oncogenic *Hras*^{G12V} from a melanocyte-specific promoter (*Tyr-ras*), more than 50% of these mice developed melanomas by the age of 6 months (97). In fact, while almost no *Tyr-ras* mice on a wild-type background developed melanomas (97), approximately half of the mice expressing *Tyr-ras* on either a selective *Ink4a*^{-/-} or a selective *Arf*^{-/-} background succumbed to the cancer by 1 year of age (33, 98). The formation of Ras-driven melanomas in *Arf*-null mice was accelerated by UV treatment, and the resulting tumors harbored *Cdk6* amplification or loss of p16^{INK4a}, which suggested that UV exposure promoted melanoma development by inactivating the pRb pathway (98). This series of studies suggested that the p16^{INK4a}-pRb and p19^{ARF}-p53 tumor suppressor pathways indeed serve as guardians against melanoma formation, and it also emphasized the importance of oncogenic Ras signaling in promoting the development of this cancer. *Hras*^{G12V}, in fact, was shown to be essential not only for the initiation but also for the maintenance of the melanocytic tumors in this model (99), which confirmed its role as a driving oncogene of melanoma.

Functional demonstration of the role played by Akt activation, particularly occurring via loss of *PTEN*, in melanoma development at first proved elusive. *Pten*-knockout mice died at an early embryonic stage, and *Pten*^{+/-} mice were highly predisposed to tumor formation and developed prostate, gastrointestinal, thyroid, and various other types of cancer, but melanomas were not observed among the spectrum of tumors in these mice (100, 101). However,

when the *Pten*^{+/-} mice were crossed into the *Cdkn2a*^{-/-} background, approximately 10% of the resulting mice developed melanoma (102), which indicates that *Pten* loss, like Ras activation, can cooperate with inactivation of the p16^{INK4a}-pRb and p19^{ARF}-p53 pathways to induce melanocytic neoplasia. A separate line of investigation, in which human melanoma cell lines were used, showed that introduction of an intact chromosome 10 or a wild-type copy of *PTEN* into melanoma cells lacking *PTEN* expression inhibited in vitro growth of these cells (103) and in vivo tumor formation in immunodeficient mice (104) and that the introduced *PTEN* gene was targeted for loss of heterozygosity in these cells, both in vitro (103) and in vivo (104). Finally, specific inhibition of the *AKT3* isoform in these cells, much like introduction of wild-type *PTEN*, stimulated apoptosis and retarded tumor growth (79). These experiments suggest involvement of the PI3K-Akt pathway in the development of melanoma.

To date, there have been no published transgenic murine studies on the role of B-Raf in melanoma development, but a number of experiments have been carried out with mouse and human cell lines. *BRAF*^{V599E} has been shown to act as a transforming oncogene both in NIH3T3 cells (66) and in an immortalized murine melanocyte cell line (105). Furthermore, knockdown of B-Raf expression by small interfering RNA (siRNA) in human melanoma cell lines harboring the *BRAF*^{V599E} mutation decreased the levels of MEK and ERK activation, inhibited cell proliferation, increased the rates of apoptosis, and blocked colony formation in soft agar (105–107). There was a specific correlation between the presence of the *BRAF* mutation and effects of the B-Raf knockdown on cell growth and cell death. For example, depletion of B-Raf expression in human fibrosarcoma cells carrying wild-type *BRAF* (106) or in melanoma cells containing an oncogenic *HRAS* mutation rather than an activating *BRAF* mutation (105) failed to block MEK-ERK signaling, inhibit cell proliferation, or promote apoptosis. Additionally, siRNA-mediated knockdown of C-Raf did not affect ERK activation, cell growth, or apoptosis in the cell lines carrying the *BRAF*^{V599E} mutation (105–107). Finally, in the first preclinical study targeting the Raf-MEK-ERK pathway for small molecule-mediated inhibition in melanoma cells, the MEK inhibitor CI 1040 was shown to inhibit in vitro growth, soft agar colony formation, and Matrigel invasion of a human melanoma cell line bearing the *BRAF*^{V599E} mutation; more importantly, it blocked the formation of pulmonary metastases and caused regression of established metastases when administered orally to immunodeficient mice injected intravenously with this cell line (108). These studies established that mutant B-Raf does have oncogenic properties, at least in a subset of melanomas, that it can serve as a potential therapeutic target (reviewed in ref. 109), and that small-molecule inhibition of the MAPK pathway is a viable therapeutic strategy.

Melanoma therapeutics

Surgical treatment of cutaneous melanoma employs specific surgical margins depending on the depth of invasion of the tumor. Specific surgical treatment guidelines of primary, nodal, and metastatic melanoma are beyond the scope of this article and are reviewed elsewhere (refs. 4, 110). Numerous agents have been used in the treatment of late-stage melanoma, but to date no single agent has significantly changed survival rates. Development of adjuvant therapies that increase survival beyond that achieved following surgery alone has been a long-standing goal of melanoma researchers and clinicians.



Chemotherapy. Among traditional chemotherapeutic agents, only dacarbazine is FDA approved for the treatment of advanced melanoma (111). Combination chemotherapy regimens (such as cisplatin, vinblastine, and dacarbazine) are often employed, though no clinical trials have demonstrated a survival advantage for combination therapy over optimal single-agent therapy (111). Temozolomide is an oral alkylating agent approved for the treatment of malignant gliomas with activity comparable to that of dacarbazine in melanoma. While there is not yet supportive clinical trial data, temozolomide has been substituted in many combination regimens and is under investigation in combination with radiation therapy for patients with melanoma metastatic to the brain (112).

Immunotherapy. A large, randomized multicenter study in high-risk melanoma patients performed by the Eastern Cooperative Oncology Group (ECOG) showed significant improvements in relapse-free and overall survival with postoperative adjuvant IFN- α -2b therapy, compared with standard observation (ECOG 1684) (4). The outcome of this study led to FDA approval of IFN- α -2b for treatment of melanoma. This study was performed on patients with deep primary tumors without lymph node involvement and node-positive melanomas. In other studies, little antitumor activity has been demonstrated in IFN- α -2b-treated metastatic stage IV melanoma. Furthermore, while a large follow-up study (Intergroup E1690) (4) confirmed relapse-free survival with high-dose IFN- α -2b, it did not show an increase in overall survival. Toxicities of high-dose IFN include constitutional (flu-like) symptoms and neuropsychiatric (depression, suicidal intention), hematologic, and hepatic effects (4). Other studies of low-dose IFN versus either observation or high-dose IFN have not shown a statistically significant increase in overall survival (summarized in ref. 4). Based on patient immune responses to a vaccine containing GM₂, a ganglioside found predominantly in melanoma cells, a subsequent intergroup trial (ECOG 1694) was designed to compare high-dose IFN- α -2b with a GM₂-containing vaccine administered with an immune-stimulating adjuvant (113). This trial was closed early, as interim analysis indicated significantly superior disease-free survival with IFN treatment. IL-2 has activity against melanoma, and high-dose therapy is FDA approved (114). Because high-dose IL-2 side-effects are significant and may be life threatening, IL-2 therapy requires inpatient management.

Biochemotherapies, which combine traditional chemotherapy with immunotherapies, such as IL-2 and IFN- α -2b, seemed promising in phase II trials, but phase III studies have not yet confirmed statistically significant survival benefits in patients with stage IV metastasis, and studies in resected, advanced stage III disease (Southwest Oncology Group/Intergroup trial S0008) are ongoing (reviewed in ref. 115). Seven large studies failed to show statistically significant increased overall survival rates for various biochemotherapy regimens (115).

Because most current adjuvant treatments have significant side effects and many have limited benefit with respect to overall survival in late-stage melanoma, there exists a strong need for the rational design of mechanism-based treatments for this devastating metastatic cancer, whose median survival rate with visceral metastases has not surpassed the 1-year barrier. Current approaches include inhibition of tumor-activated signaling cascades, exploiting the host cancer immune response, targeting of melanocyte and tumor-specific antigens and activities (such as blockade of angiogenesis and of proteins that resist apoptosis), and blockade of tumor growth and tumor-stroma interactions.

Many treatment regimens are now in varying stages of development (from preclinical studies to phase II trials). This review will focus primarily on recent efforts to target the Ras cascade as an example of a rational approach to therapeutics.

Signal transduction inhibition by Raf inhibitor BAY 43-9006. Small-molecule kinase inhibitors have potential as novel therapies for cancer and inflammatory conditions, as exemplified by currently marketed compounds imatinib mesylate (Gleevec; Novartis Pharmaceuticals) and gefitinib (Iressa; AstraZeneca) (116). BAY 43-9006 is a bis-aryl urea that was discovered in a screen for C-Raf inhibitors (117). Related urea compounds have been described as inhibitors of several other kinases (118). In addition to blocking C-Raf kinase activity with an IC₅₀ of 3–12 nM (107, 117, 119), this compound inhibits both wild-type and mutant B-Raf, albeit less potently, with an IC₅₀ of 16–28 nM for wild-type B-Raf and an IC₅₀ of 29–47 nM for B-Raf^{V599E} (105, 107, 119). It is also able to inhibit several receptor tyrosine kinases involved in cancer progression, although the inhibition of these kinases is even less robust than that of the Raf proteins (119). In vitro studies showed that BAY 43-9006 is able to block ERK activation and cell proliferation in immortalized murine melanocytes transformed with either oncogenic RAS or BRAF^{V599E} (105), as well as in several human melanoma cell lines carrying the BRAF^{V599E} mutation (107). More importantly, oral administration of the drug to mice carrying tumor xenografts of one of these cell lines significantly retarded tumor growth (107). A recent study extended these findings to a panel of human tumor cell lines derived from several different cancer types and determined that orally administered BAY43-9006 had broad antitumor activity against xenografts formed from breast, colon, and lung cancer cell lines, with no adverse toxicity (119). These encouraging findings have led to the use of BAY 43-9006 in a number of clinical trials in patients with various solid tumors.

Initial phase I trials showed that BAY 43-9006 was well tolerated when administered either as a monotherapy (120) or in combination with traditional chemotherapy (121), with only mild adverse side effects observed. Phase II trials are ongoing, and to date BAY 43-9006 monotherapy has shown promise against several types of cancer, particularly renal cell carcinoma (122, 123). Unfortunately, in patients with advanced melanoma, clear evidence of the drug's efficacy has yet to be demonstrated. After 12 weeks of treatment, fewer than 20% of patients had stable disease, and fewer than 5% had a partial response, with the vast majority of patients succumbing to progressive disease (123, 124). Phase II trials of BAY 43-9006 in combination with chemotherapy agents such as carboplatin and paclitaxel (125) are currently in progress. This combination regimen has shown some preliminary evidence of anticancer activity — of 35 patients in the initial trial, 11 had a partial response and 19 had stable disease (125).

There are several possible explanations for the rather modest therapeutic efficacy of BAY 43-9006 in melanoma patients. As a signal transduction inhibitor, this compound is predicted to act as a cytostatic agent (122), and it may need to be combined with one or more cytotoxic agents in order to exert significant antitumor activity. Alternatively, the inhibition of B-Raf^{V599E} activity by this drug may not be sufficiently potent. The progression of renal cell carcinoma (RCC) has been shown to involve CRAF alterations (S1) but not BRAF mutations (S2); a potentially important issue, given that BAY 43-9006 demonstrates 5- to 10-fold stronger inhibition of C-Raf than B-Raf^{V599E}. Taken together, these findings suggest that the greater therapeutic benefit enjoyed by RCC patients treat-



ed with BAY 43-9006, as compared with melanoma patients, may stem from more efficient inhibition of C-Raf or another target in RCC patients. Thus, when more specific and potent B-Raf inhibitors are developed, these compounds may show greater efficacy against melanoma. It is also possible that the cohort of melanoma patients treated with BAY 43-9006 did not have the proper mutation status to allow therapeutic benefit from the inhibitor. The drug has been shown to inhibit the growth of a human melanoma cell line carrying the *BRAF*^{V599E} mutation (107) and several cell lines harboring oncogenic *RAS* (105, 119), although the latter result was demonstrated in transformed murine melanocytes (105) and in human cell lines derived from tumors other than melanoma (119) and has not been directly shown in human melanoma cells. It does not appear that all patients selected for the clinical trial of BAY 43-9006 carried the *BRAF*^{V599E} mutation (123, 124). It is unclear whether patients whose melanomas harbor oncogenic *RAS* mutations rather than *BRAF* mutations would benefit from this drug, and therapeutic benefit is even less likely in patients whose tumors arose through other mechanisms, such as *PTEN* loss or *AKT3* amplification. Efforts to classify the clinical trial participants by *BRAF* mutation status and correlate the mutation status with treatment outcome are currently underway (124, 125). Finally, B-Raf may not represent the ideal therapeutic target in patients with advanced melanoma. As discussed above, the high frequency of *BRAF* mutations in premalignant melanocytic lesions (67, 83, 87) suggests that the major effects of this oncogene may be limited to the initiation of melanoma development and that inhibition of B-Raf activity may have therapeutic benefit for patients with early-stage disease but not for those whose cancer has progressed to the metastatic stage. This theory is contradicted by data showing that melanoma cell lines carrying the *BRAF*^{V599E} mutation depend on B-Raf expression for growth and survival (105–107), but the applicability of results from studies involving cell lines to actual patient tumors may be limited. More relevant experimental models of human melanoma may lead to more accurate preclinical assessments of potential therapeutic targets.

Angiogenesis inhibition and depletion of tumor nutrition. In addition to signal transduction inhibition, several other rationally designed melanoma treatments are currently in clinical trials. In lieu of direct cytotoxic approaches, these therapies are aimed at starving the tumor by inhibiting angiogenesis or depleting nutrients essential for cancer growth. Of the antiangiogenic compounds, VEGFR inhibitors SU5416 and AG-013736 demonstrated broad-spectrum antitumor activity in mice bearing xenografts of human cancer cell lines originating from various tissues, including melanoma (S3, S4). Both compounds showed acceptable safety profiles in phase I trials (S5, S6) and progressed to phase II. Currently, no phase II data are available on AG-013736, while the efficacy of SU5416 against metastatic melanoma has proven disappointing. Of 26 evaluable patients in the trial, only 1 had a partial response and 1 had stable disease, with all patients eventually succumbing to melanoma after a median survival time of 29 weeks (S7). In preclinical studies, angiogenesis inhibitors that function by antagonizing integrin signaling, such as EMD 121974, have also demonstrated activity against human melanoma xenografts (S8). EMD 121974 had tolerable adverse effects in phase I trials (S9), but there is not yet available published data for phase II trials in melanoma. Angiogenesis inhibition is theoretically an attractive strategy for inhibition of tumor growth, but the efficacy of antiangiogenic agents against melanoma remains to be determined.

Melanoma cells, unlike normal human cells, require arginine for survival (S10). The arginine-degrading enzyme arginine deiminase (ADI), when formulated with polyethylene glycol (PEG) to make ADI-PEG, was shown to inhibit the growth of human melanoma xenografts in mice (S11). Initial phase I and II trials of ADI-PEG in melanoma patients demonstrated that the enzyme was well tolerated and had modest anticancer activity: of 41 patients in the trial, 6 had a partial response and 2 had stable disease (S12). ADI-PEG is currently in phase II trials (see www.clinicaltrials.gov). The results for ADI-PEG and the angiogenesis inhibitors, much like those for BAY 43-9006, highlight the difficulties in translating data from preclinical models into clinical efficacy. However, it is possible that the phase II trials of these agents that are currently in progress will show more evidence of antitumor activity and that future studies combining signal transduction inhibitors, angiogenesis inhibitors, and nutrient depleting enzymes with each other and/or with traditional chemotherapeutic agents will bring out the effectiveness of these novel agents.

Future directions

Melanoma is strongly associated with inactivation of the retinoblastoma (Rb) and p53 tumor suppressor pathways and activation of oncogenes in the Ras cascade. Gene therapy to directly replace lost and/or mutated tumor suppressors at physiologic levels and in the appropriate tissue context remains a technical challenge, but it is a potential long-range scientific goal in the treatment of melanoma. Small-molecule human double minute 2 (HDM2) antagonists have been developed and have potential to treat tumors with wild-type *TP53* (S13). B-Raf and other Ras pathway effectors are potential therapeutic targets in melanoma, and more potent B-Raf-specific inhibitors may prove more effective than the general Raf inhibitor BAY 43-9006. There are efforts currently underway to target the PI3K Ras-effector pathway with small-molecule inhibitors (S14). In addition, secondary analyses of trials designed to evaluate the effects of statins on coronary disease suggest that these agents may also have potential chemopreventive effects in melanoma (S15). One proposed mechanism of action of statins in melanoma prevention is blockade of prenylation, which is required for Ras localization to the cell membrane (S16). Case-control studies and metaanalyses are ongoing to evaluate this preliminary observation.

In addition to kinase pathways, other molecules unique to melanoma or melanocytes are viable drug targets. Although results of initial efforts using peptide and whole-cell extracts to stimulate an immune response to cell surface proteins specific to melanoma, including GM₂, were promising, large-scale studies have not revealed significant antitumor activity (S17). However, efforts to enhance host response to cellular vaccines by augmenting tumor immunity, with agents such as recombinant GM-CSF, may provide promising therapeutic agents (24). Since melanoma development is associated with telomerase activation (S18, S19), gene therapy approaches using anti-telomerase ribozymes (S20) and telomere homolog oligonucleotides (S21, S22) are currently in development for the treatment of melanoma and have shown antitumor activity in animal models. Targeting of pathways specific to melanocytes and critical to melanoma survival may also prove to be a viable therapeutic strategy, as suggested by recent preclinical data on the unique role of CDK2 in melanoma survival and CDK2 regulation by the microphthalmia-associated transcription factor in melanocytes (S23). Blockade of CDK2 sup-



pressed growth and cell cycle progression in melanoma cell lines but not in other cancer cell lines.

Because early-stage melanoma is often curable by surgery, additional research efforts focus on blocking tumor-stroma and tumor-microvascular interactions that facilitate invasion and metastasis (S24, S25). Tumors such as melanoma often display resistance to apoptosis. Current efforts to inhibit the resistance of tumors to apoptosis target blockade of human B cell leukemia/lymphoma-2 (Bcl-2, an inhibitor of apoptosis) in melanoma (S26–S28). In addition to small-molecule inhibitors, vaccines, and gene therapies, humanized antibodies are a tantalizing therapeutic agent due to their low clinical safety profile. Also, because all melanomas may not have equal response to treatment modalities due to different mechanisms of tumorigenesis, the ability to perform complex genetic mutational analyses will allow for individually tailored patient prognoses and therapeutics (84). Finally, ongoing proteomics screens may identify other novel therapeutic targets in melanoma (S29).

Prevention should always be at the forefront of the fight to reduce melanoma. Protection from UV irradiation is the key preventive measure. In the final analysis, increased patient survival without a significant concurrent increase in morbidity remains a

challenging treatment goal for metastatic melanoma. The design of rational therapeutics targeting key players in disease pathways tailored to tumor-specific mutations will certainly be the focus of translational cancer research in the coming years.

Acknowledgments

This work was supported by the US Veteran's Affairs Office of Research and Development. A.E. Adams is supported by a National Institute of Arthritis and Musculoskeletal and Skin Diseases (NIAMS) NIH training grant (Harvard Department of Dermatology). Y. Chudnovsky is a Howard Hughes Medical Institute predoctoral fellow. We thank Susan Swetter for manuscript review and helpful suggestions and Uma Sundram and the Stanford Dermatology Department for melanoma histology slides.

Note: References S1–S30 are available online with this article; doi:10.1172/JCI200524808DS1.

Address correspondence to: Amy E. Adams, Department of Dermatology, Stanford University, 269 Campus Drive, CCSR 2150, Stanford, California 94305, USA. Phone: (650) 728-6295; Fax: (650) 723-8762; E-mail: aadams91@stanford.edu.

1. Urteaga, O., and Pack, G.T. 1966. On the antiquity of melanoma. *Cancer*. **19**:607–610.
2. Laennec, R.T.H. 1806. Sur les melanoses. *Bulletin de Faculte de Medecine Paris*. **1**:24.
3. Norris, W. 1820. A case of fungoid disease. *Edinb. Med. Surg. J.* **16**:562–565.
4. Nestle, M., and Carol, H. 2003. Melanoma. In *Dermatology*. J. Bologna, J. Jorizzo, and R. Rapini, editors. Mosby. New York, New York, USA. 1789–1815.
5. Greenlee, R.T., Hill-Harmon, M.B., Murray, T., and Thun, M. 2001. Cancer statistics, 2001. *CA Cancer J. Clin.* **51**:15–36.
6. Weinstock, M.A. 2001. Epidemiology, etiology, and control of melanoma. *Med. Health R. I.* **84**:234–236.
7. MacKie, R.M., Freudenberger, T., and Aitchison, T.C. 1989. Personal risk-factor chart for cutaneous melanoma. *Lancet*. **2**:487–490.
8. Jhappan, C., Noonan, F.P., and Merlino, G. 2003. Ultraviolet radiation and cutaneous malignant melanoma. *Oncogene*. **22**:3099–3112.
9. Marks, R. 2000. Epidemiology of melanoma. *Clin. Exp. Dermatol.* **25**:459–463.
10. Gilchrist, B. 1999. Anti-sunshine vitamin A. *Nat. Med.* **5**:376–377.
11. Tucker, M.A., et al. 1997. Clinically recognized dysplastic nevi. A central risk factor for cutaneous melanoma. *JAMA*. **277**:1439–1444.
12. Chin, L., Merlino, G., and DePinho, R.A. 1998. Malignant melanoma: modern black plague and genetic black box. *Genes Dev.* **12**:3467–3481.
13. Haluska, F.G., and Hodi, F.S. 1998. Molecular genetics of familial cutaneous melanoma. *J. Clin. Oncol.* **16**:670–682.
14. Clark, W.H., Jr., et al. 1984. A study of tumor progression: the precursor lesions of superficial spreading and nodular melanoma. *Hum. Pathol.* **15**:1147–1165.
15. Meier, F., et al. 1998. Molecular events in melanoma development and progression. *Front. Biosci.* **3**:D1005–D1010.
16. Rusciano, D. 2000. Differentiation and metastasis in melanoma. *Crit. Rev. Oncog.* **11**:147–163.
17. Balch, C.M., et al. 2001. Final version of the American Joint Committee on Cancer staging system for cutaneous melanoma. *J. Clin. Oncol.* **19**:3635–3648.
18. Clark, W.H., Jr., From, L., Bernardino, E.A., and Mihm, M.C. 1969. The histogenesis and biologic behavior of primary human malignant melanomas of the skin. *Cancer Res.* **29**:705–727.
19. Breslow, A. 1979. Prognostic factors in the treatment of cutaneous melanoma. *J. Cutan. Pathol.* **6**:208–212.
20. Clark, W.H., Jr., et al. 1989. Model predicting survival in stage I melanoma based on tumor progression. *J. Natl. Cancer Inst.* **81**:1893–1904.
21. Duncan, L.M., et al. 2001. Melastatin expression and prognosis in cutaneous malignant melanoma. *J. Clin. Oncol.* **19**:568–576.
22. Clemente, C.G., et al. 1996. Prognostic value of tumor infiltrating lymphocytes in the vertical growth phase of primary cutaneous melanoma. *Cancer*. **77**:1303–1310.
23. Ramirez-Montagut, T., Turk, M.J., Wolchok, J.D., Guevara-Patino, J.A., and Houghton, A.N. 2003. Immunity to melanoma: unraveling the relation of tumor immunity and autoimmunity. *Oncogene*. **22**:3180–3187.
24. Dranoff, G. 2003. GM-CSF-secreting melanoma vaccines. *Oncogene*. **22**:3188–3192.
25. Barth, A., Wanek, L.A., and Morton, D.L. 1995. Prognostic factors in 1,521 melanoma patients with distant metastases. *J. Am. Coll. Surg.* **181**:193–201.
26. Morton, D.L., et al. 1999. Validation of the accuracy of intraoperative lymphatic mapping and sentinel lymphadenectomy for early-stage melanoma: a multicenter trial. Multicenter Selective Lymphadenectomy Trial Group. *Ann. Surg.* **230**:453–463; discussion 463–455.
27. Weedon, D. 2002. *Skin Pathology*. 2nd edition. Churchill Livingstone. London, United Kingdom. 1100 pp.
28. Busam, K.J., and Jungbluth, A.A. 1999. Melan-A, a new melanocytic differentiation marker. *Adv. Anat. Pathol.* **6**:12–18.
29. Gown, A.M., Vogel, A.M., Hoak, D., Gough, F., and McNutt, M.A. 1986. Monoclonal antibodies specific for melanocytic tumors distinguish subpopulations of melanocytes. *Am. J. Pathol.* **123**:195–203.
30. Hanahan, D., and Weinberg, R.A. 2000. The hallmarks of cancer. *Cell*. **100**:57–70.
31. Hayward, N.K. 2003. Genetics of melanoma predisposition. *Oncogene*. **22**:3053–3062.
32. Chin, L. 2003. The genetics of malignant melanoma: lessons from mouse and man. *Nat. Rev. Cancer*. **3**:559–570.
33. Sharpless, N.E., Kannan, K., Xu, J., Bosenberg, M.W., and Chin, L. 2003. Both products of the mouse Ink4a/Arf locus suppress melanoma formation in vivo. *Oncogene*. **22**:5055–5059.
34. Quelle, D.E., Zindy, F., Ashmun, R.A., and Sherr, C.J. 1995. Alternative reading frames of the INK4a tumor suppressor gene encode two unrelated proteins capable of inducing cell cycle arrest. *Cell*. **83**:993–1000.
35. Serrano, M., Hannon, G.J., and Beach, D. 1993. A new regulatory motif in cell-cycle control causing specific inhibition of cyclin D/CDK4. *Nature*. **366**:704–707.
36. Kamijo, T., et al. 1998. Functional and physical interactions of the ARF tumor suppressor with p53 and Mdm2. *Proc. Natl. Acad. Sci. U. S. A.* **95**:8292–8297.
37. Pomerantz, J., et al. 1998. The Ink4a tumor suppressor gene product, p19Arf, interacts with MDM2 and neutralizes MDM2's inhibition of p53. *Cell*. **92**:713–723.
38. Stott, F.J., et al. 1998. The alternative product from the human CDKN2A locus, p14(ARF), participates in a regulatory feedback loop with p53 and MDM2. *EMBO J.* **17**:5001–5014.
39. Zhang, Y., Xiong, Y., and Yarbrough, W.G. 1998. ARF promotes MDM2 degradation and stabilizes p53: ARF-INK4a locus deletion impairs both the Rb and p53 tumor suppression pathways. *Cell*. **92**:725–734.
40. Hussussian, C.J., et al. 1994. Germline p16 mutations in familial melanoma. *Nat. Genet.* **8**:15–21.
41. Kamb, A., et al. 1994. Analysis of the p16 gene (CDKN2) as a candidate for the chromosome 9p melanoma susceptibility locus. *Nat. Genet.* **8**:23–26.
42. Gruis, N.A., et al. 1995. Homozygotes for CDKN2 (p16) germline mutation in Dutch familial melanoma kindreds. *Nat. Genet.* **10**:351–353.
43. Bishop, D.T., et al. 2002. Geographical variation in the penetrance of CDKN2A mutations for melanoma. *J. Natl. Cancer Inst.* **94**:894–903.
44. Florell, S.R., et al. 2004. Longitudinal assessment of the nevus phenotype in a melanoma kindred. *J. Invest. Dermatol.* **123**:576–582.
45. Box, N.F., et al. 2001. MC1R genotype modifies risk of melanoma in families segregating CDKN2A mutations. *Am. J. Hum. Genet.* **69**:765–773.
46. Flores, J.F., et al. 1996. Loss of the p16INK4a and p15INK4b genes, as well as neighboring



- 9p21 markers, in sporadic melanoma. *Cancer Res.* **56**:5023–5032.
47. Kumar, R., Smeds, J., Lundh Rozell, B., and Hemminki, K. 1999. Loss of heterozygosity at chromosome 9p21 (INK4-p14ARF locus): homozygous deletions and mutations in the p16 and p14ARF genes in sporadic primary melanomas. *Melanoma Res.* **9**:138–147.
48. Fujimoto, A., Morita, R., Hatta, N., Takehara, K., and Takata, M. 1999. p16INK4a inactivation is not frequent in uncultured sporadic primary cutaneous melanoma. *Oncogene.* **18**:2527–2532.
49. Cachia, A.R., Indsto, J.O., McLaren, K.M., Mann, G.J., and Arends, M.J. 2000. CDKN2A mutation and deletion status in thin and thick primary melanoma. *Clin. Cancer Res.* **6**:3511–3515.
50. Brookes, S., et al. 2002. INK4a-deficient human diploid fibroblasts are resistant to RAS-induced senescence. *EMBO J.* **21**:2936–2945.
51. Randerson-Moor, J.A., et al. 2001. A germline deletion of p14(ARF) but not CDKN2A in a melanoma-neural system tumour syndrome family. *Hum. Mol. Genet.* **10**:55–62.
52. Rizos, H., et al. 2001. A melanoma-associated germline mutation in exon 1beta inactivates p14ARF. *Oncogene.* **20**:5543–5547.
53. Bahuaui, M., et al. 1998. Germ-line deletion involving the INK4 locus in familial proneness to melanoma and nervous system tumors. *Cancer Res.* **58**:2298–2303.
54. Petronzelli, F., et al. 2001. CDKN2A germline splicing mutation affecting both p16(ink4) and p14(arf) RNA processing in a melanoma/neurofibroma kindred. *Genes Chromosomes Cancer.* **31**:398–401.
55. Wolfel, T., et al. 1995. A p16INK4a-insensitive CDK4 mutant targeted by cytolytic T lymphocytes in a human melanoma. *Science.* **269**:1281–1284.
56. Zuo, L., et al. 1996. Germline mutations in the p16INK4a binding domain of CDK4 in familial melanoma. *Nat. Genet.* **12**:97–99.
57. Soufir, N., et al. 1998. Prevalence of p16 and CDK4 germline mutations in 48 melanoma-prone families in France. The French Familial Melanoma Study Group. *Hum. Mol. Genet.* **7**:209–216.
58. Tsao, H., Benoit, E., Sober, A.J., Thiele, C., and Haluska, F.G. 1998. Novel mutations in the p16/CDKN2A binding region of the cyclin-dependent kinase-4 gene. *Cancer Res.* **58**:109–113.
59. Castresana, J.S., et al. 1993. Lack of allelic deletion and point mutation as mechanisms of p53 activation in human malignant melanoma. *Int. J. Cancer.* **55**:562–565.
60. Lubbe, J., Reichel, M., Burg, G., and Kleihues, P. 1994. Absence of p53 gene mutations in cutaneous melanoma. *J. Invest. Dermatol.* **102**:819–821.
61. Papp, T., Jafari, M., and Schiffmann, D. 1996. Lack of p53 mutations and loss of heterozygosity in non-cultured human melanocytic lesions. *J. Cancer Res. Clin. Oncol.* **122**:541–548.
62. Albino, A.P., et al. 1994. Mutation and expression of the p53 gene in human malignant melanoma. *Melanoma Res.* **4**:35–45.
63. Sparrow, L.E., Soong, R., Dawkins, H.J., Iacopetta, B.J., and Heenan, P.J. 1995. p53 gene mutation and expression in naevi and melanomas. *Melanoma Res.* **5**:93–100.
64. Zerp, S.F., van Elsland, A., Peltenburg, L.T., and Schrier, P.I. 1999. p53 mutations in human cutaneous melanoma correlate with sun exposure but are not always involved in melanomagenesis. *Br. J. Cancer.* **79**:921–926.
65. Daniotti, M., et al. 2004. BRAF alterations are associated with complex mutational profiles in malignant melanoma. *Oncogene.* **23**:5968–5977.
66. Davies, H., et al. 2002. Mutations of the BRAF gene in human cancer. *Nature.* **417**:949–954.
67. Pollock, P.M., et al. 2003. High frequency of BRAF mutations in nevi. *Nat. Genet.* **33**:19–20.
68. Demunter, A., Stas, M., Degreef, H., De Wolf-Peeters, C., and van den Oord, J.J. 2001. Analysis of N- and K-ras mutations in the distinctive tumor progression phases of melanoma. *J. Invest. Dermatol.* **117**:1483–1489.
69. Gorden, A., et al. 2003. Analysis of BRAF and N-RAS mutations in metastatic melanoma tissues. *Cancer Res.* **63**:3955–3957.
70. Satyamoorthy, K., et al. 2003. Constitutive mitogen-activated protein kinase activation in melanoma is mediated by both BRAF mutations and autocrine growth factor stimulation. *Cancer Res.* **63**:756–759.
71. Wu, H., Goel, V., and Haluska, F.G. 2003. PTEN signaling pathways in melanoma. *Oncogene.* **22**:3113–3122.
72. Isshiki, K., Elder, D.E., Guerry, D., and Linnenbach, A.J. 1993. Chromosome 10 allelic loss in malignant melanoma. *Genes Chromosomes Cancer.* **8**:178–184.
73. Herbst, R.A., Weiss, J., Ehnis, A., Cavenee, W.K., and Arden, K.C. 1994. Loss of heterozygosity for 10q22-10qter in malignant melanoma progression. *Cancer Res.* **54**:3111–3114.
74. Healy, E., Rehman, I., Angus, B., and Rees, J.L. 1995. Loss of heterozygosity in sporadic primary cutaneous melanoma. *Genes Chromosomes Cancer.* **12**:152–156.
75. Guldberg, P., et al. 1997. Disruption of the MMAC1/PTEN gene by deletion or mutation is a frequent event in malignant melanoma. *Cancer Res.* **57**:3660–3663.
76. Teng, D.H., et al. 1997. MMAC1/PTEN mutations in primary tumor specimens and tumor cell lines. *Cancer Res.* **57**:5221–5225.
77. Tsao, H., Zhang, X., Benoit, E., and Haluska, F.G. 1998. Identification of PTEN/MMAC1 alterations in uncultured melanomas and melanoma cell lines. *Oncogene.* **16**:3397–3402.
78. Dhawan, P., Singh, A.B., Ellis, D.L., and Richmond, A. 2002. Constitutive activation of Akt/protein kinase B in melanoma leads to up-regulation of nuclear factor-kappaB and tumor progression. *Cancer Res.* **62**:7335–7342.
79. Stahl, J.M., et al. 2004. Deregulated Akt3 activity promotes development of malignant melanoma. *Cancer Res.* **64**:7002–7010.
80. Brose, M.S., et al. 2002. BRAF and RAS mutations in human lung cancer and melanoma. *Cancer Res.* **62**:6997–7000.
81. Dong, J., et al. 2003. BRAF oncogenic mutations correlate with progression rather than initiation of human melanoma. *Cancer Res.* **63**:3883–3885.
82. Uribe, P., Wistuba, I.I., and Gonzalez, S. 2003. BRAF mutation: a frequent event in benign, atypical, and malignant melanocytic lesions of the skin. *Am. J. Dermatopathol.* **25**:365–370.
83. Yazdi, A.S., et al. 2003. Mutations of the BRAF gene in benign and malignant melanocytic lesions. *J. Invest. Dermatol.* **121**:1160–1162.
84. Rodolfo, M., Daniotti, M., and Vallacchi, V. 2004. Genetic progression of metastatic melanoma. *Cancer Lett.* **214**:133–147.
85. Cohen, Y., et al. 2003. Lack of BRAF mutation in primary uveal melanoma. *Invest. Ophthalmol. Vis. Sci.* **44**:2876–2878.
86. Edwards, R.H., et al. 2004. Absence of BRAF mutations in UV-protected mucosal melanomas. *J. Med. Genet.* **41**:270–272.
87. Kumar, R., Angelini, S., Snellman, E., and Hemminki, K. 2004. BRAF mutations are common somatic events in melanocytic nevi. *J. Invest. Dermatol.* **122**:342–348.
88. Houben, R., et al. 2004. Constitutive activation of the Ras-Raf signaling pathway in metastatic melanoma is associated with poor prognosis [abstract]. *J. Carcinog.* **3**:6.
89. Kumar, R., et al. 2003. BRAF mutations in metastatic melanoma: a possible association with clinical outcome. *Clin. Cancer Res.* **9**:3362–3368.
90. Tsao, H., Zhang, X., Fowlkes, K., and Haluska, F.G. 2000. Relative reciprocity of NRAS and PTEN/MMAC1 alterations in cutaneous melanoma cell lines. *Cancer Res.* **60**:1800–1804.
91. Tsao, H., Goel, V., Wu, H., Yang, G., and Haluska, F.G. 2004. Genetic interaction between NRAS and BRAF mutations and PTEN/MMAC1 inactivation in melanoma. *J. Invest. Dermatol.* **122**:337–341.
92. Serrano, M., et al. 1996. Role of the INK4a locus in tumor suppression and cell mortality. *Cell.* **85**:27–37.
93. Kamijo, T., et al. 1997. Tumor suppression at the mouse INK4a locus mediated by the alternative reading frame product p19ARF. *Cell.* **91**:649–659.
94. Kamijo, T., Bodner, S., van de Kamp, E., Randle, D.H., and Sherr, C.J. 1999. Tumor spectrum in ARF-deficient mice. *Cancer Res.* **59**:2217–2222.
95. Krimpenfort, P., Quon, K.C., Mooi, W.J., Loonstra, A., and Berns, A. 2001. Loss of p16Ink4a confers susceptibility to metastatic melanoma in mice. *Nature.* **413**:83–86.
96. Sharpless, N.E., et al. 2001. Loss of p16Ink4a with retention of p19Arf predisposes mice to tumorigenesis. *Nature.* **413**:86–91.
97. Chin, L., et al. 1997. Cooperative effects of INK4a and ras in melanoma susceptibility in vivo. *Genes Dev.* **11**:2822–2834.
98. Kannan, K., et al. 2003. Components of the Rb pathway are critical targets of UV mutagenesis in a murine melanoma model. *Proc. Natl. Acad. Sci. U. S. A.* **100**:1221–1225.
99. Chin, L., et al. 1999. Essential role for oncogenic Ras in tumour maintenance. *Nature.* **400**:468–472.
100. Di Cristofano, A., Pesce, B., Cordon-Cardo, C., and Pandolfi, P.P. 1998. Pten is essential for embryonic development and tumour suppression. *Nat. Genet.* **19**:348–355.
101. Podsypanina, K., et al. 1999. Mutation of Pten/Mmac1 in mice causes neoplasia in multiple organ systems. *Proc. Natl. Acad. Sci. U. S. A.* **96**:1563–1568.
102. You, M.J., et al. 2002. Genetic analysis of Pten and Ink4a/Arf interactions in the suppression of tumorigenesis in mice. *Proc. Natl. Acad. Sci. U. S. A.* **99**:1455–1460.
103. Robertson, G.P., et al. 1998. In vitro loss of heterozygosity targets the PTEN/MMAC1 gene in melanoma. *Proc. Natl. Acad. Sci. U. S. A.* **95**:9418–9423.
104. Stahl, J.M., et al. 2003. Loss of PTEN promotes tumor development in malignant melanoma. *Cancer Res.* **63**:2881–2890.
105. Wellbrock, C., et al. 2004. V599EB-RAF is an oncogene in melanocytes. *Cancer Res.* **64**:2338–2342.
106. Hingorani, S.R., Jacobetz, M.A., Robertson, G.P., Herlyn, M., and Tuveson, D.A. 2003. Suppression of BRAF(V599E) in human melanoma abrogates transformation. *Cancer Res.* **63**:5198–5202.
107. Karasarides, M., et al. 2004. B-RAF is a therapeutic target in melanoma. *Oncogene.* **23**:6292–6298.
108. Collisson, E.A., De, A., Suzuki, H., Gambhir, S.S., and Kolodney, M.S. 2003. Treatment of metastatic melanoma with an orally available inhibitor of the Ras-Raf-MAPK cascade. *Cancer Res.* **63**:5669–5673.
109. Tuveson, D.A., Weber, B.L., and Herlyn, M. 2003. BRAF as a potential therapeutic target in melanoma and other malignancies. *Cancer Cell.* **4**:95–98.
110. Balch, C.M., et al. 2000. Long-term results of a multi-institutional randomized trial comparing prognostic factors and surgical results for intermediate thickness melanomas (1.0 to 4.0 mm). Inter-group Melanoma Surgical Trial. *Ann. Surg. Oncol.* **7**:87–97.
111. Eggermont, A.M., and Kirkwood, J.M. 2004. Re-evaluating the role of dacarbazine in metastatic melanoma: what have we learned in 30 years? *Eur. J. Cancer.* **40**:1825–1836.
112. Douglas, J.G., and Margolin, K. 2002. The treatment of brain metastases from malignant melanoma. *Semin. Oncol.* **29**:518–524.



113. Kirkwood, J.M., et al. 2001. High-dose interferon alfa-2b significantly prolongs relapse-free and overall survival compared with the GM2-KLH/QS-21 vaccine in patients with resected stage IIB-III melanoma: results of intergroup trial E1694/S9512/C509801. *J. Clin. Oncol.* **19**:2370-2380.
114. Agarwala, S. 2003. Improving survival in patients with high-risk and metastatic melanoma: immunotherapy leads the way. *Am. J. Clin. Dermatol.* **4**:333-346.
115. Margolin, K.A. 2004. Biochemotherapy for melanoma: rational therapeutics in the search for weapons of melanoma destruction. *Cancer.* **101**:435-438.
116. Dumas, J., Smith, R.A., and Lowinger, T.B. 2004. Recent developments in the discovery of protein kinase inhibitors from the urea class. *Curr. Opin. Drug Discov. Devel.* **7**:600-616.
117. Lyons, J.F., Wilhelm, S., Hibner, B., and Bollag, G. 2001. Discovery of a novel Raf kinase inhibitor. *Endocr. Relat. Cancer.* **8**:219-225.
118. Dumas, J. 2002. Protein kinase inhibitors from the urea class. *Curr. Opin. Drug Discov. Devel.* **5**:718-727.
119. Wilhelm, S.M., et al. 2004. BAY 43-9006 exhibits broad spectrum oral antitumor activity and targets the RAF/MEK/ERK pathway and receptor tyrosine kinases involved in tumor progression and angiogenesis. *Cancer Res.* **64**:7099-7109.
120. Strumberg, D., et al. 2002. Results of phase I pharmacokinetic and pharmacodynamic studies of the Raf kinase inhibitor BAY 43-9006 in patients with solid tumors. *Int. J. Clin. Pharmacol. Ther.* **40**:580-581.
121. Richly, H., et al. 2003. A phase I clinical and pharmacokinetic study of the Raf kinase inhibitor (RKI) BAY 43-9006 administered in combination with doxorubicin in patients with solid tumors. *Int. J. Clin. Pharmacol. Ther.* **41**:620-621.
122. Ahmad, T., and Eisen, T. 2004. Kinase inhibition with BAY 43-9006 in renal cell carcinoma. *Clin. Cancer Res.* **10**:6388-6392.
123. Ratain, M.J., et al. 2004. Preliminary antitumor activity of BAY 43-9006 in metastatic renal cell carcinoma and other advanced refractory solid tumors in a phase II randomized discontinuation trial (RDT) [abstract]. *ASCO Annual Meeting Proceedings.* June 5-8, 2004. *J. Clin. Oncol.* **22**(Suppl.):4501.
124. Ahmad, T., et al. 2004. BAY 43-9006 in patients with advanced melanoma: The Royal Marsden Experience [abstract]. *2004 ASCO Annual Meeting Proceedings.* June 5-8, 2004. *J. Clin. Oncol.* **22**(Suppl.):7506.
125. Flaherty, K.T., et al. 2004. Phase I/II trial of BAY 43-9006, carboplatin (C) and paclitaxel (P) demonstrates preliminary antitumor activity in the expansion cohort of patients with metastatic melanoma [abstract]. *2004 ASCO Annual Meeting Proceedings.* June 5-8, 2004. *J. Clin. Oncol.* **22**(Suppl.):7507.